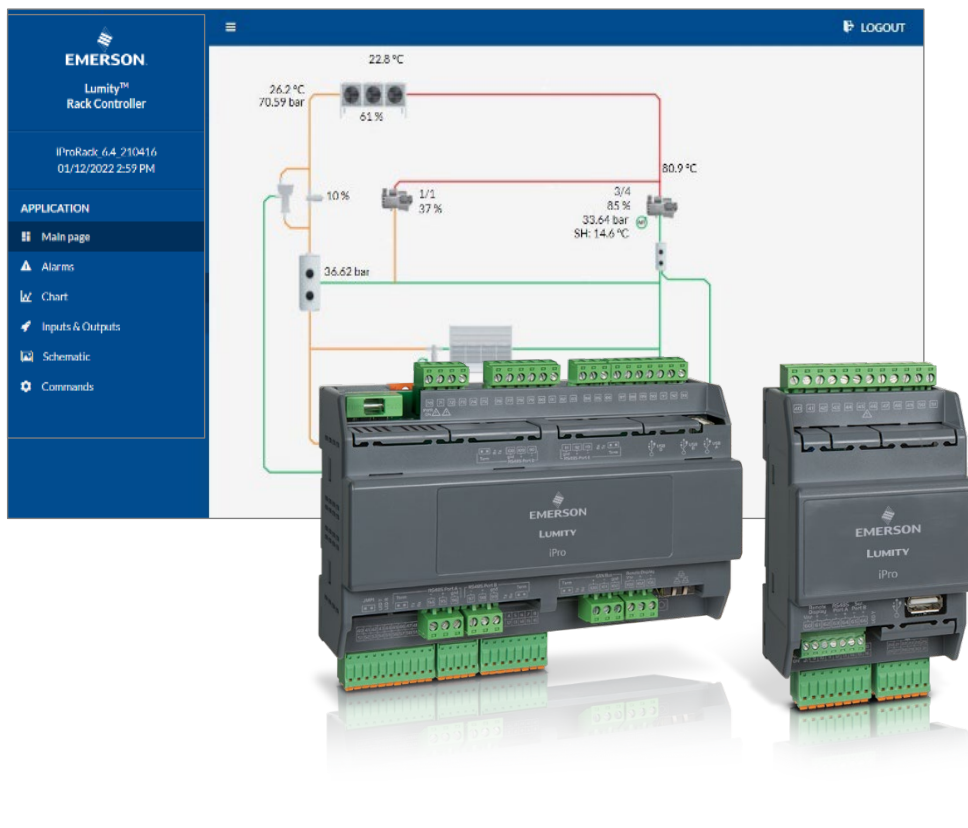


New integrated website for an advanced management of controllers for compressor racks and condensing units



Website for advanced management of Lumity™ iProRACK controllers in CO₂ applications



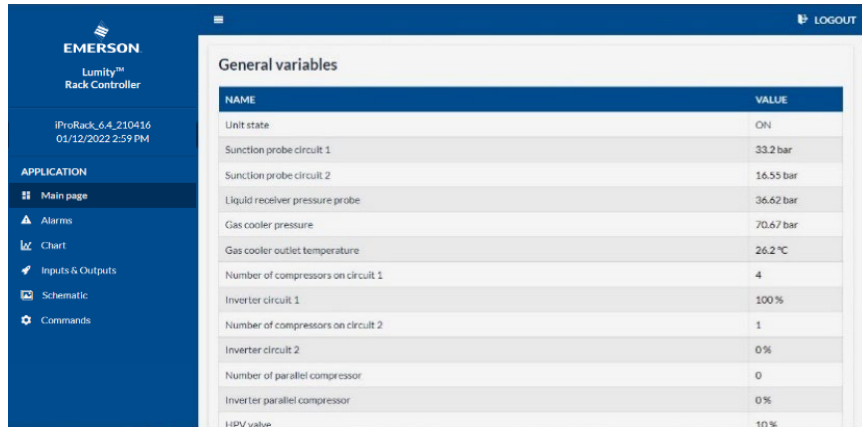
Emerson is pleased to announce its new website developed for the Lumity™ iProRACK controllers designed for compressor racks and CO₂ condensing units.

The web pages allow to rapidly access all variables of the controllers and possible active alarms, thus simplifying the commissioning and the use of the rack or the condensing unit.

The enhanced graphic interface ensures a complete and intuitive viewing of the machine status. The integrated website solution can be used from the start with the most common browsers and it can also be displayed on all mobile devices.

1. Main screens

The website displays an innovative graphic interface in line with other Emerson products, such as XWEB PRO and Control Panel iPro. One of its main strengths is the completeness of the pages available on it, such as Variables (figure below), Alarms, Charts, I/O, Schematic and Commands.



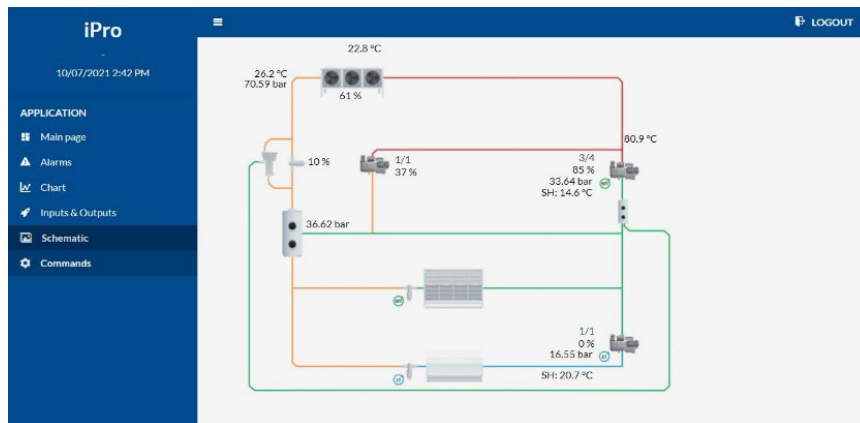
The screenshot shows the Emerson iPro web interface. On the left is a navigation menu with options: Main page, Alarms, Chart, Inputs & Outputs, Schematic, and Commands. The main content area displays a table titled 'General variables' with the following data:

NAME	VALUE
Unit state	ON
Sunction probe circuit 1	33.2 bar
Sunction probe circuit 2	16.55 bar
Liquid receiver pressure probe	36.62 bar
Gas cooler pressure	70.67 bar
Gas cooler outlet temperature	26.2 °C
Number of compressors on circuit 1	4
Inverter circuit 1	100 %
Number of compressors on circuit 2	1
Inverter circuit 2	0 %
Number of parallel compressor	0
Inverter parallel compressor	0 %
HPV valve	10 %

Though the “Control Panel” it is possible to manage the access for the users, preventing some of them from visiting certain pages of the website.

1.1 Schematic

The schematic page is generated automatically, and it is based on the parameter setting of the controller, thus reflecting the configuration of the machine.



2. Availability

The website will be available on the controllers delivered from February 2022. For IPRC215D and IPRC315D models the web pages will be accessed through the Ethernet port on the controller; for the IPRC208D the use of a USB-ETH-CONV converter will be necessary.

Please contact our Sales dpt. for product pricing and our Customer Service to receive technical documentation.